

CONTINUITY

Volume 34, No. 3

Preservation Action Council of San Jose
Dedicated to Preserving San Jose's Architectural Heritage

Fall 2023

COVER STORY

1 Biggest PAC*SJ Party Ever!

PRESERVATION ISSUES/NEWS

- 4 PAC*SJ 2023 Endangered Eight
- 5 PAC*SJ Party Sponsors
- 6 Pay Tribute to Valley Historic Sakauye & Seely Farms

PAC*SJ NEWS

- 8 PAC*SJ Historic Walking Tours
- 10 On the **RADAR**
 - First Church of Christ, Scientist
 - Poor House Bistro Opening
 - Almaden Winery Cellar
 - Alum Rock Park Log Cabin
- 11 PAC*SJ Calendar
- 12 Walking The Alameda Commercial Historic District
- 14 PAC*SJ's Summer Sale Success

PRESERVATION ARTICLES

- 15 San Jose's Famous Candy/Ice Cream Shop
- 17 SJ Historic Landmarks News
- 17 Day on the Bay, Alviso Marina
- 18 New PAC*SJ Merchandise
- 18 CA Doors Open Event
- 18 Germania Hall
- 19 Breaking News—First Church!
- 19 Membership Form
- 20 Board of Directors Roster

Biggest PAC*SJ Party Ever!

On June 23rd, an amazing evening of wine, whisky, music, and games celebrated San Jose's architectural heritage at the beautiful South 16th Street home of Ms. Georgie Huff in Naglee Park, San Jose! It was quite a night!

Partygoers could search out the Speakeasy and enter



▲ Party goes, Lisa Wangsness, John Frolli, and Deborah Mills

◀ Ms. Georgie Huff who generously offered her lovely home for the PAC*SJ party.

with the secret word to play and win at the blackjack or roulette tables. The silent auction featured unique opportunities and San Jose-centric treasures. At a mystery box booth, attendees were tempted to roll the dice three times for a bottle of wine. Prizes were awarded for the best vintage outfits; there were many fascinating outfits from most decades through the last 100 years. There were multiple wine bars: one hosted by Bill Schroh Jr., CEO History San Jose; champagne served by former Mayor Liccardo in the living room; and mixed drinks created by Sal Pizarro and Matt Roben, in a kilt.

(Cont'd p. 2)

Biggest Party (Cont'd)

In front of the house a wide variety of art-works were displayed for sale in a tented area. Delicious appetizers by the Naglee Park Garage were beautifully presented on tables in the delightful rear yard.

The talented Gala Group that brought the party idea to our PAC*SJ Board and then produced this fantastic evening included Marianne Salas, Denise Olenak, Brooke Harris, Nancy Williams, and Georgie Huff, who graciously offered her wonderful home. PAC*SJ's key partners with the Gala Group were Patt Curia, Gratia Rankin, John Frolli and of course our E.D., Ben Leech. A giant thanks to all and to the additional volunteers who helped make this party such a momentous success.

The event resulted in a considerable boost to our funds for our mission—preserving San Jose's unique and diverse architectural and cultural heritage through advocacy, education, and civic engagement. Our generous sponsors made this all possible. Please see the sponsor list on page 5. Our most grateful thanks to all the sponsors, volunteers and guests! ☘

(More photos on p. 3)



▲ **Marv and Bonnie Bamburg, Representative Zoe Loefgren, and Bill Schroh.**

► **Nancy Williams, Suzanne and Jim Salata.**



◀ **Leslie Masunaga, April Halberstadt, Larry Ames, and Lynne Stephenson, PAC*SJ President.**

► **Sal Pizarro focusing on his bartending duties.**



Biggest Party (Cont'd)



Top left, Marianne Salas sits in front of the dealer and game table. She played the officer in charge of raiding the Speakeasy about every 20 minutes.

*To view all party photos visit
www.from-roaring-to-rest.preservation.org*

Top middle, André Luthard points to sign outside the Speakeasy exit.

*Top right, Ben Leech, PAC*SJ's Executive Director.*



is published quarterly by the

**PRESERVATION ACTION
COUNCIL OF SAN JOSE**

The opinions expressed by contributors are
not necessarily those of PAC*SJ.

Editor: Gayle Frank

Please submit your letters/comments
to info@preservation.org.

408-998-8105 or to
42A S. First Street,
San Jose, CA 95113

© 2023 Preservation Action Council of San Jose

*PAC*SJ is a 501(c)3 non-profit
organization*



Party greeters Lynda Sereno, Patt Curia, and Gratia Rankin.

PAC*SJ's 2023 Endangered 8

First Church of Christ, Scientist 1905
43 E. St. James Street: Neglect

Burbank Theater 1949
560 S. Bascom Avenue: Neglect, Redevelopment

IBM Building 11 1958
5677 Lexington Avenue: Neglect

Milligan Lot & Forman's Arena c. 1860, 1926
405-447 W. St. John Street: Redevelopment

Levi Strauss Factory 1949
115 Terraine Street: Redevelopment

Sam's Downtown Feed c. 1925
759 W. San Carlos Street: Redevelopment

Alum Rock Park Log Cabin 1916
15571 Alum Rock Avenue: Neglect

Ban Family Farmstead c. 1890
1065 S. Winchester Blvd: Redevelopment

For more details and photos of these endangered eight properties please visit the PAC*SJ website at:
<https://www.preservation.org/e8-2023>

Do you have ideas, suggestions, memories, or historic photos/artifacts related to these places? Are you concerned about other threatened resources that we

should consider for future lists? We want to hear from you! Please contact us via either the form link below, or email advocacy@preservation.org, or call us at (408) 998-8105.

<https://www.preservation.org/endangered-8-contact>

More Party Photos



Krista Van Laan & Gary Hubbard



Sam Liccardo



David Willyard & Heather David

PAC*SJ Party Sponsors—THANK YOU!!



"THE BOSS"
CARL & MARIANNE SALAS



"THE CHARLESTON"
ANONYMOUS
THE KIEVE FOUNDATION

"BOUNCER"
GARDEN CITY RECYCLING & SALVAGE
LAURA HENDERSON & JASON SILVA

SILVA

"SMUGGLER"
OSCAR O'NAGLEE PARK
[Denise Olenak , Brooke Harris, Scott Brown, Alex Fitzpatrick]
BEAR

"MOONSHINER"

BONNIE & MARVIN BAMBURG
CHRISTIAN K. & JAMIE M. BONNER
DESIGNLINK HOME
ANDRÉ LUTHARD
SANDRA MOLL & RICK HOLDEN
JIM RAMONI & DAVID CISNEROS

JOHN SALAS
SOUTH BAY PAINTS
SWENSON BUILDERS
URBAN CATALYST
WORRYLESSWEALTH.COM

"THE CHICKEN IN EVERY POT"

SYLVIA CARROLL
PATRICIA CURIA
DI SALVO FAMILY TRUST
GAYLE FRANK
HISTORY SAN JOSE

HEATHER LANGE HOMES-INTERO
METRO NEWSPAPERS
GRATIA RANKIN
THE SCHOENNAUER COMPANY

Let's Pay Tribute to Valley Historic Farms

The Seely Avenue Mixed-Use Project is planned for a 23-acre parcel on Seely Avenue encompassing two historic Santa Clara Valley farms, the Seely farm and the Sakauye farm. The site borders Seely Avenue, E. Trimble Road, and the Coyote Creek Trail. Charles R. Seely and his wife purchased the 120-acre ranch in 1886. Yuwakichi Sakauye purchased a small portion of Seely's land from Charles Seely in 1907, before the 1913 Alien Land Act prohibited the Japanese from buying property. If they had leased the land, they would have lost everything during WWII. Charles' son, Edward Seely and Yuwakichi's son, Eiichi Sakauye, became good friends. When Edward went off to fight in WWI, the Sakauye family watched over the Seely farm and Seely's invalid mother. When the Sakauyes were sent to the Wyoming internment camp, Edward Seely accepted temporary ownership and looked after the Sakauye 20-acre farm, making sure it was there for them when they returned.

During Eiichi's internment, he was allowed to photograph life in the camp. His photos and stories were included in a 1965 documentary, "The Nisei: the Pride and the Shame." In 2000, Eiichi published a Photo Essay called "Heart Mountain." While Eiichi lived in the camp, he served in numerous leadership roles.



Eiichi Sakauye with his famous pears.

Besides the earlier Seely House (right) and out-buildings, the property includes the 1920 Sakauye house (top right), pump house, 1910 barn, shed, 1930 pump house, and wagon house, plus fruit trees and planted rows of vegetables. Because this site is associated with Japanese farming and agricultural practices in the Valley, and the house is a good example of Spanish Colonial Revival architectural design, several reports concluded that it is a historical resource and is eligible for listing on the California Register as a Historic District.



Conversely, the integrity of the 1880s Seely house (below) and barn is reported lacking from multiple alterations and conversions and does not appear to be eligible for any historic listing. Charles Seely was a well-respected orchardist and a sound businessman in Santa Clara Valley.

A development project proposes to demolish all structures on site for the construction of over a thousand residential units, ground-floor retail space and a 2.5-acre public park. Interpretive signage plus other means of memorializing the Sakauye and Seely family legacies within the proposed park are included in the plans.

PAC*SJ is somewhat supportive of much of the proposed project. However, PAC*SJ believes preserving and incorporating select historic resources from the Sakauye site for inclusion in the public park and

(Cont'd p. 7)



Historic Farms (Cont'd)

the private grounds would enhance the interest and quality of the proposed project while honoring its cultural and historical significance. Other preservation ideas include adaptively re-using some of these buildings as park offices, restrooms, frame for an urban garden, or house a farmer's market area. Honoring the agricultural history should include saving a sampling of the fruit and nut trees and placing them throughout the project and in the park.

In the 1970s, Eiichi Sakauye (1912-2005) helped establish the Japanese American Museum of San Jose and the Milpitas Historical Museum. He served as a Trustee on a school board and for the Santa Clara Unified School District, belonged to the Japanese American Citizen League, the California Pioneers of Santa Clara County, and the Santa Clara County Pear Association. He served on the Santa Clara County Heritage Commission for over 20 years and worked closely with the County Agricultural Commission and the Valley Water District. He was truly a commendable influence in the community. He and his first wife, Suzuye, had two daughters. After Suzuye's passing, Eiichi married Marie Kawasaki in 1975.

Eventually, Eiichi and his brothers owned at least 175 acres

of farmland in the county. He was known for his excellent grafting methods and his ingenuity with farm machinery. Eiichi donated his vintage farm equipment and a few migrant cabins to the Japanese American Museum and History San Jose. The fruit from the Sakauye farm is still sold at the well-known 1970



Eiichi Edward Sakauye



An orchard on the Sakauye Farm, one of the few farms left in SJ.

fruit stand at Seely Avenue on the Sakauye family property.

Preserving at least part of this site at Seely Avenue would make an excellent commemoration and reminder of Eiichi Sakauye's many achievements in local agriculture and his contributions as a community leader. Additionally, the history and significance of Japanese farming life in Santa Clara County must be told.

—Gayle Frank

Sources:

—1) *A Historic Resource Evaluation of the Property at 681 E. Trimble Rd, San Jose, Santa Clara County, CA.* Evans & De Shazo, Inc, Sebastopol, CA, May 12, 2023

—2) <https://www.jamsj.org/blog/2011/12/03/yesterdays-farmer-eiichi-edward->

—PAC*SJ Memorandum, 7/13/2023 on PAC*SJ/Hannover Site Visit on 6/19/2023

—Valley of Heart's Delight, santaclararesearch.net; Charles R. Seely

Right, Eiichi Sakauye's Photo Essay on Heart Mountain Internment life during WWII.

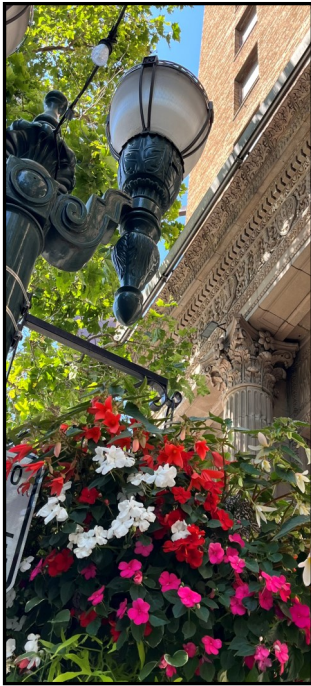
(All photos from 1) and 2) sources above.)



PACSJ Historic Walking Tours—Reserve Your Space!

San Jose Downtown Commercial National Historic District

Saturday, Sept. 30; 10 am-12:00 pm ✧ PAC**SJ* Members \$15; Non-members \$20



Join PAC**SJ* on a historic walking tour along S. 1st, San Fernando, S. 2nd, E. & W. Santa Clara, and Post Streets for an up-close view of some of our grandest and unique downtown historic buildings. This mercantile and financial center for over 100 years is the core of the San Jose Downtown Commercial National Historic District and is densely populated with historic buildings and multiple architectural styles representing the growth periods of Downtown San Jose. Highlights include San Jose City Landmarks--the Bank of Italy (Bank of America), Knox Goodrich Building, Rea Block, Letitia Building, Security Building, Jose Theatre, New Century Block, Fountain Alley Building, James Clayton Building, San Jose Savings & Loan Building, and the Glen-Fenerin Building. We will begin and end at the San Jose Landmark El Paseo Court where PAC**SJ*'s office resides. Guests will be able to walk through the Court and visit our office at the end of the tour. Audio receivers for guests will enhance the tour with easier listening.

Space is limited. Reserve at www.preservation.org



The Alameda and College Park

Saturday, Oct. 21; 10 am-12:00 pm ✧ PAC**SJ* Members \$15; Non-members \$20



Bring your most comfortable shoes! This walking tour takes us up and down The Alameda, where we will learn about the grand old houses that line both sides of this historic thoroughfare. We'll look at residences designed by some of our best architects, including Julia Morgan, Wolfe & Higgins, and Charles McKenzie, and hear the stories about the owners who lived there. Then onward to the College Park neighborhood, north of The Alameda. The charming College Park neighborhood was developed from what was called the University Grounds, the area surrounding the Methodist-based University of the Pacific. Founded in 1851, the university was California's first co-educational institute of higher learning. Today, Bellarmine College Preparatory sits on the land that once held the University, which since moved to Stockton. There is a lot to see on an architectural walking tour of College Park with its houses that range from the 1800s to contemporary and its tree-lined streets named after Methodist bishops.

Space limited. Reserve at www.preservation.org



GARDEN CITY

RECYCLE & SALVAGE

VINTAGE BUILDING MATERIALS • ARCHITECTURAL SALVAGE
RECLAIMED LUMBER • ANTIQUES



SCAN THIS CODE TO SEE OUR INVENTORY OF AMAZING ITEMS FOR SALE!

Adopt, Don't Shop!



--a message from PAC*SJ & the Kieve Foundation



ON THE RADAR

First Church of Christ, Scientist; 43 E. St. James St.

PAC*SJ is encouraged by the latest news that the City of San Jose is proposing higher fines for neglected historic

properties. It's about time. PAC*SJ has pleaded with the City for several years about the Church's need for attention and enforcement. This historic gem is the most glaring example of an unsightly and long-suffering structure due to owner neglect. The 1905 neo-classic building was one of the most attractive in the St. James Historic District, but it has been wrapped, since 2018, in various sets of tarps that increasingly deteriorate each season. The sight has disgusted citizens and is only getting worse. It has become our symbol of blight and is referred to as the "garbage bag church."

An Aug. 25th Mercury News article stated that the property owner, Z & L Properties, already received fines totaling \$85,000. Now the City recommends raising its maximum enforcement fees to \$500,000. PAC*SJ strongly supports this proposal. Z & L has constantly ignored demands to care for the Church property and has left it in decline. The company's CEO faced bribery charges in San Francisco and has returned to China. Multiple properties in San Jose purchased by Z & L have languished.

During the Aug. 24th press conference, Mayor Matt Mahan said, "Behind me is a symbol of negligence that will no longer be tolerated in the City of San Jose. What is a beautiful, historic landmark has become an eyesore." Councilmember Omar Torres added, "I will not allow for this significant, historic property to deteriorate. We are giving our residents false promises about our abilities to address significant blight issues in our city."

Finally—there is some action on this issue, and PAC*SJ is hopeful. As stated by PAC*SJ Executive Director, Ben Leech, we encourage the Church to be used as a community-serving space. At press time the increased penalty fee cap proposal will go to the Council's Rules Committee on Aug. 30th. Stay tuned for the outcome.

Poor House Bistro

The Bistro's Grand Re-opening was held on August 16, celebrating its new moniker, Famiglia Meduri's Poor House Bistro in Little Italy. It is now open for business on Wednesdays through Sundays and is still serving

New Orleans & Creole Italian Cuisine. The Little Italy Festival returns on October 1st.

The Little Italy San Jose Cultural Center & Museum is next door to the Poor House Bistro. The restored c. 1910 is an excellent example of homes in the 20th century working class neighborhood in San Jose.

Almaden Winery Park; Chambertin Drive/Treviso Ave.

The Friends of the Winemakers, (FOW), a 501c3 non-profit organization formed in 1975, is leading the charge to convert the original Almaden Vineyard's 1852 cellar into a regional winery museum. Almaden Vineyards, established in Santa Clara County in 1852, is the oldest commercial winery in California. A gathering at the site is planned for Oct. 15 from 2 -5 pm to share Almaden Vineyard history, provide an update on the winery museum, and to invite all former Vineyard employees.

Alum Rock Log Cabin, San Jose City Landmark #22

The long-awaited report for repairing the Log Cabin, commissioned by the Parks and Recreation Department, was at long last available to PAC*SJ on July 31. The report (Historic Structure Report of Alum Rock Log Cabin, March 2023, by AECOM) identifies two potential historic preservation processes: 1) rehabilitation and 2) a reconstruction—alternatives to demolition, both designed to meet the Standards and to reduce or avoid significant impacts to the Log Cabin. However, the report also states that repairing the Cabin will require expertise from an experienced building professional in log building construction to assess the cabin's deterioration and determine what can be re-used and what will require replacement. PAC*SJ was expecting that information would be included in the report that took two years for us to see.

Because the Parks Department is experiencing great fiscal challenges, especially after winter storm damage, PAC*SJ is concerned that repairing the cabin will not take place for years, if ever, and the cabin will be lost by neglect, weather or fire.

We were told by the Parks Department that its goal for the cabin project is to preserve history, find partners to assist in the project, and produce a "high quality project." After a July meeting, both a Parks Department representative and our PAC*SJ E.D. agreed to explore grants and apprenticeship work programs as possible solutions. The Cabin is one of our 2023 Endangered 8 historic resources. (See page 4.)

PAC*SJ 2023 Calendar

- Sept 18** Monday, PAC*SJ Board Meeting, 6:30—8:30 PM. 42A S. 1st St.*
- Sept 30** Saturday, PAC*SJ **Historic Walking Tour** of San Jose Downtown Historic Commercial District, 10 AM—12 pm. Space limited. More details on page 8.
- Oct 16** Monday, PAC*SJ Board Meeting, 6:30—8:30 PM. 42A S. 1st St.*
- Oct 14** Day on the Bay, Alviso Marina, 10 AM—3 PM. Visit PAC*SJ's booth. See pg. 14
- Oct 21** Saturday, PAC*SJ **Historic Walking Tour** of College Park & The Alameda. 10 AM—12 PM. Space limited. More details on page 8.
- Nov 3, 4** Friday, Saturday. PAC*SJ Holiday Treasure Sale. 295 Sequoia Ave.
- Nov 13** Monday, PAC*SJ Board Meeting, 6:30—8:30 PM on Zoom.
- Nov 16** Thursday, PAC*SJ **Annual Meeting, Board Election & Holiday Party**. 6:30 PM—8:00 PM at Faber's, 702 S. 1st St. Here's your chance to see the interior of this restored former saloon and bicycle shop!
- Dec 18** Monday, PAC*SJ Board Meeting, 6:30—8:30 PM. 42A S. 1st St.*

*Call to confirm Board meeting locations at 408-998-8105. Rarely locations may change or be held online.



PAC*SJ Annual Meeting, Election & Holiday Party

Save the Date—Nov. 16—6:30 –8 pm

Visit us at Faber's, the restored former bicycle shop and early saloon at 702 S. 1st Street. Here's a chance to see the interior. Come meet Faber's owner and friends, enjoy holiday refreshments, celebrate the season, and watch our overview of PAC*SJ's 2023 activities!

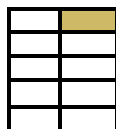
Free advanced reservations requested at www.preservation.org



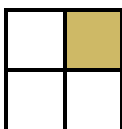
ADVERTISE IN CONTINUITY!

Continuity is distributed to over 400 San Jose preservationists, homeowners and decision-makers. It's a great way to get your message out to your best potential customers! For ads larger than the business card, you must supply camera-ready artwork, or PAC*SJ can provide it at an additional charge.

Buy ads in 6 issues and SAVE! Plus, all multiple-issue ads come with a free membership!



Business Card
Single issue \$50
3 issues \$120



1/4 Page
Single issue
\$100



1/2 Page
Single issue
\$200



Full Page
Single issue
\$375

Walking The Alameda Commercial District

PAC*SJ's historic walking tour of The Alameda Commercial Corridor on July 22nd was very informative with many interesting structures to see. Our tour guides, Krista Van Laan and Kay Gutknecht, returned to lead their newest walking tour for PAC*SJ on the 1.5 mile, two-hour walk. We started at the corner of Cleaves and The Alameda, traveled down The Alameda, turning right at the Race Street/Alameda intersection. On the way we were able to visit the interior of Westminster Church and admire its beautiful stained glass windows.

We returned on the east side of the Alameda at Lenzen, making short stops down North and South Keeble, and North Morrison to see a few unique, historic homes. From nineteenth-century candy shops to Art Deco movie houses to classic roadside Americana, The Alameda was—and remains—one of the city's premier neighborhood commercial corridors, with a stellar collection of buildings that tell the story of the area's growth and evolution. On the east wall of Crema Coffee, we admired a recent mural by Francisco Ramirez, which portrays important pieces of The Alameda history and agricultural industry. The following is a list of the highlights as we progressed along the walking tour.

938 The Alameda, built 1913. Billy DeFrank Center.
990 The Alameda, built 1924. Zavala Building.
1050 The Alameda, built 1941. The Alameda Motel.
1062-1068 The Alameda, built 1927. Recycle Bookstore.
1345 The Alameda, built 1928. The ABC Market
1349 The Alameda, built 1927. Westminster Presbyterian Church
1433 The Alameda, built 1928. Towne Theater.
1445 The Alameda, built 1926. LaBarre Fitness, was Bank of Italy.
1081 The Alameda, built 1927. Greenlee's Bakery
60 N. Keeble, built 1890. Leib Carriage House.
176 N. Morrison, built 1891. Frederick and Stella Gross House
865 The Alameda, built 1929. Biggs Cardosa, was the Col & Cerruti Packard dealership.
808 The Alameda, built 1933. Babe's Muffler.
848 The Alameda, built 1884. Schurra's Candy.

The tour was sold-out with a waiting list so Krista agreed to do an encore tour on August 5th. We were blessed with good weather, not too hot, but warm enough that we needed our sunglasses, hats, and water.

Below are a few of the many interesting facts on the tour:

- * The Alameda Motel is one of the oldest motels in San Jose and has retained many of its original features such as the tile roof and windows.
- * The handsome building at 1066 The Alameda (Recycle Book Store) was a popular roller rink from 1927-1974.
- * Electric street cars replaced horse drawn rail cars in 1888 and traveled down The Alameda. (Cont'd p. 13)

◀ *Walking Tour participants on the steps of the Westminster Church on The Alameda.*

(Photo: Gayle Frank)



The Alameda (Cont'd)



1066
*The
Alameda,
once a
popular
roller
rink.*

- * The large building at 1928 The Alameda was the biggest market of its time with its own parking lot
- * The Leib Carriage House was part of a large estate belonging to Judge Samuel F. Leib. It is on the National Trust List of Historic Places and was reconstructed after a fire in the late 1890s.
- * The 1941 Art Deco former "Tiny's Drive-in" was the first drive-in in Santa Clara County. ☼

— Gayle Frank



*Left, the 1891 Frederick and Stella Gross Victorian House
at 176 N. Morrison*



*Above, The first Schurra's Candy Store at
848 The Alameda, built in 1884.*

PAC*SJ Summer Sale a Success

On Aug. 18-19, PAC*SJ held its biggest rummage sale ever. Six neighbors shared their sidewalks, driveways and porches to display the donations from neighbors, members and six different estates collected over the last three months. Gross sales exceeded \$10,600.

It was a long, hot four days with more items being unboxed daily. The clean up was accomplished by six diehards. I appreciated the sales team staying until 2pm to keep selling while we tore down the canopies and boxed items for donation. The San Jose Woman's Club offered its dumpster for the items that couldn't be recycled or re-used. Paul, Shawn, Tom, Ken, and Tim tidied up the street.. Neighbors were amazed that the driveway left overs and the street pile disappeared so quickly.

Families who contribute space for the huge sale were: Nemmer-Buis, Halberstadt, Wangsness-Liesenfelt, Curia, Salas, and Mason. Thank you!

Our volunteers included: **Storage Supervisor**—Rebecca Smith and Joe Baronessa; **Truckers**—Stephen Walker, Gabby Solleder, Lynne Stephenson, Robert Carter, Tim McAuliff, Paul Wedel, Shawn McCarson, Denise Olenak; **Merchandisers**—Efrat Shahr, Eileen Shydowski, Connie Foley, Lisa Wangsness, Rosie Gallipeau, Heather David, Rebecca Evans, Mary Lou Mason, Ron Hagen; **Supers Sellers**—Sandy Swirsky and Lyle Merithew, Catherine Pelizzari, Sara Bruce, Joyce Weissman, Leslie Masunaga, Jan Kearns, Jeanne Thomas, Cici Green, Lucille Boone, Deborah Mills, Manuela Burge, Narges Fakhimi, Charleen Sidens, Lucinda Lawson, Gilda Messner; and **Super Star Cashier**—Wini Leeds.

Special callout to Margie Bennet, Leslie Masunaga and Peter DiDonato who helped pack up donations from a neighbor who moved unexpectedly and to Jason Kazarian who priced photography donations.

The PAC*SJ member reception was small but lively with beverages provided by the Salas' and Kim Aldridge. Plenty of ice cream was scooped by

Cici Green. Food provided during the sale included chefs Tim McAuliff and Rosie Gallipeau, and our luncheon hostesses were Kim Aldridge and Lorene Sisson.

The next sale is the Christmas Treasures on November 3rd and 4th at 295 Sequoia Ave.

The most exciting item sold was the double stadium seats from Candlestick Park bought by Naglee Park's own Geoff Alexander who reminisced about growing up under the Stadium's shadow. Jim Norvel engineered the reconstruction. ☿

—In gratitude, Patt Curia

PS: The SJWC (San Jose Woman's Club) is planning a Naglee Park Home Tour on December 9th on my block!! Eight houses will be open, sharing their owners' approach to the holidays. Docents are needed.



*Geoff Alexander with his vintage Candlestick Park stadium seats, purchased at the PAC*SJ Sale. (Photo: Patt Curia)*

San Jose's Famous Candy/Ice Cream Shop

Maurice O'Brien (1840-1916), an Irish immigrant, started selling candy in a basket in 1868 at a Market Street hotel entrance, and then expanded his O'Brien's Candy Factory, selling candy from a delivery wagon and buckskin horse stationed at the corner of S. 1st Street and San Fernando. Earlier, Maurice had arrived in San Francisco in 1860 and developed his candy-making talents by working with candy-maker Charles Mercer.



Maurice O'Brien selling his candy and ice cream from his wagon before he opened his first store at 30 S. 1st Street, c.1870s). (Photo: History San Jose)

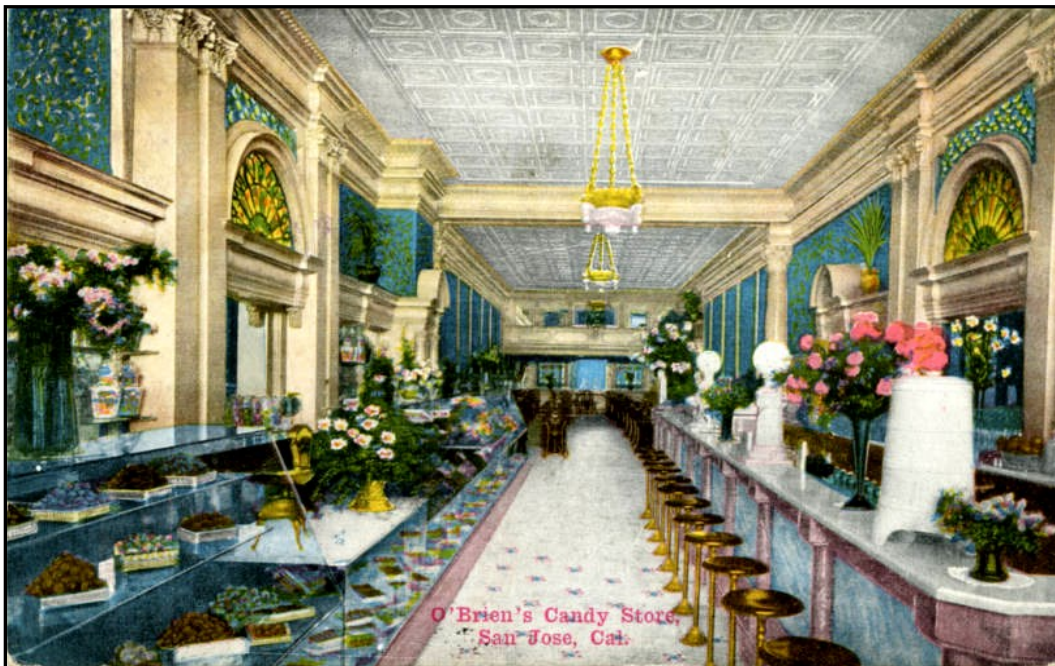
Many sources say that in 1874, Maurice opened his O'Brien's Candy Store at 30 S. 1st Street with the candy factory to the rear, equipped with machinery of the times. But looking through line ads in local newspapers, it appears O'Brien opened shop at 287 S. 1st Street by 1874, advertising his fresh candy and ice cream. In 1879 an ad (SJ Mercury) specifies O'Brien's Candy Factory at 331 S. 1st Street carried a large assortment of candy plus a large selection of toys such as dolls, doll carriages, wagons, velocipedes, and rocking horses. In the January 1884 Evening News, O'Brien's was still listed at 331 S. 1st Street. By December 1884, an Evening News ad listed his location at 30 S. 1st

Street. Maurice's ads in 1889 for his ice cream sodas said they were, "the finest in town." A year later an Evening News ad (4/26/1890) announced that O'Brien's was, "now making our ice cream with machinery which will insure uniformity of excellence."

Maurice was one of the first to serve ice cream west of Detroit and his high-quality products were known for novel ice cream, unique ice, and the newest and fanciest

fountain drinks. It was the most popular place to go in San Jose for many decades. It was the regular meeting place for the San Jose Rotary Club beginning in 1914. O'Brien's also became a popular dating spot.

By 1892, O'Brien's had thirty employees and candy sales extended throughout the Santa Clara Valley. He made wagon deliveries from as far north as San Mateo and down to Santa Cruz and Salinas. In 1901, Maurice O'Brien helped found the San Jose Merchants' Association and served as its first president.



O'Brien's souvenir post card. Photo taken after the 1906 earthquake rehabilitation.

Note the chandeliers and wall architectural décor. (Photo: History San Jose)

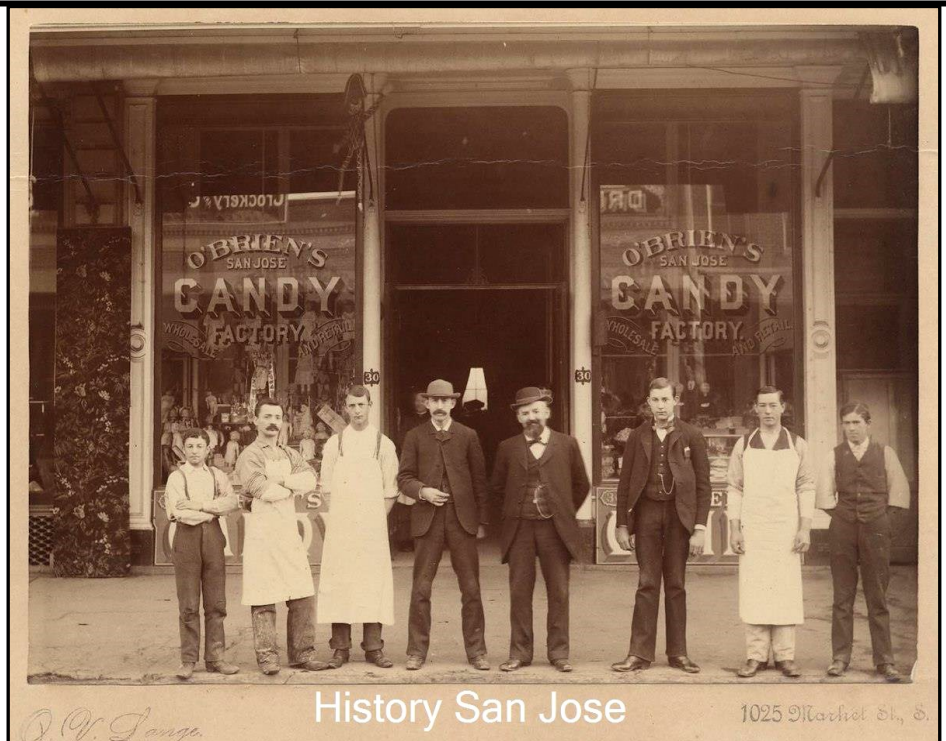
(Cont'd p. 16)

Candy/Ice Cream Shop (Cont'd)

When Maurice died in 1916, his son Charles took over the complete management of O'Brien's. At that time, Maurice lived at 910 S. 2nd Street. Both Maurice and Charles were active in the community; Charles O'Brien served on the San Jose City Council. After 53 years at 30 S. 1st Street, O'Brien's moved the famous ice cream/candy shop to 223 S. 1st Street in 1928, adding a thriving, elegant restaurant, but business finally closed in 1956.

During World War II, GI's from San Jose introduced O'Brien's candies to the people in the nations where they served. After the war, O'Brien's began receiving requests/orders for candy from throughout the world.

Recent historic reports concluded that the building at 30 S. 1st was not eligible for listing on the National and California historic registers, nor a city landmark or a contributor to the National Downtown Historic District since it lost most of its integrity. It is too bad it was not kept intact and saved to remind us of the extraordinary and long-lasting business Maurice O'Brien created in the City of San Jose.



Maurice O'Brien (5th from left) and employees stand in front of O'Brien's Candy Factory at 30 S. 1st Street.

History San Jose and the Rotary Club of San Jose built a smaller replica of the early O'Brien's shop in 1977 at History Park. A second Rotary Club of San Jose grant funded a renovation of the small store in 2016.

The San Jose Historic Resources Inventory lists the original O'Brien's structure at 30 S. 1st Street as a Structure of Merit. The building, constructed in 1858, years before Maurice O'Brien opened his candy store, was reconstructed in 1912 after a serious fire. The new construction added a second story but did retain reusable building materials from its earlier days.

Today's residents may remember the structure at 30 S. 1st Street after evolving in 1984 into the Lido Restaurant and Night Club and Grants Jewelry, in business until 2015. The building was altered multiple times over the years, especially in the 1950s.

After the building is demolished, proposed plans by the developer include constructing a new 6-story building with ground floor commercial space, upper story offices, and a seventh-floor rooftop bar/restaurant.

(Cont'd p. 17)



O'Brien's matchbook from much later years, showing the 3 generations of O'Brien's: Maurice, Charles, and Charles, Jr.

(Photo: History San Jose)

SJ Historic Landmarks Commission News

At the August 2nd Historic Landmarks Commission (HLC) meeting, the Draft Alviso Historic Context Statement and Survey was reviewed and commented on.

The HLC approved Staff Recommendations to add two properties to the San Jose Historic Resources Inventory (HRI) as Candidate City Landmarks (CCL):

1200 South 2nd Street (APN 477-01-081)
140 East Virginia Street (APN 472-18-024)
[900 S. 2nd Street (APN 472-16-039)—was deferred]

In addition, 71 properties were approved as Structures of Merit (SM) to be added to the HRI. These sites are on: S. 2nd, S. 3rd, S. 5th, S. 6th, E. Humboldt Streets, and Hollywood Avenue.

The HLC also removed nine properties on S. 2nd, S. 6th, and E. Humboldt Streets from the HRI.

Individual addresses for these changes are available in the August 2nd HLC minutes at www.sanjoseca.gov/homeshowpublisheddocument/100441/638259639348970000

The HLC meetings are held on the first Wednesday of most months. One can participate in-person or on Zoom. ☼

Candy/Ice Cream Shop (Cont'd)

An entrance to this new construction will pass through the Knox-Goodrich landmark building next door, displaying the history of the Knox-Goodrich and O'Brien's Candy sites on the lobby walls. PAC*SJ believes this proposed architectural design is compatible and sensitive to the site's important historic neighbors, the Knox-Goodrich Building and the Bank of Italy. PAC*SJ recommended that the north exterior, brick wall of the Knox-Goodrich Building with its ghost sign be visible from the interior of the adjacent proposed construction. ☼

—Gayle Frank

Sources:

—DPR 523 Franklin Maggi., 1/10/2002
—30-32 S. 1st Street San Jose, CA Historic Resource Evaluation – Draft. David J. Powers & Associates, Inc./Garavaglia Architecture, Inc. August 9, 2019.
—Historic Landmarks Commission Staff Report, HLC Agenda: 08-05-20 ITEM: 3.a.
—San Jose Evening News
—San Jose Mercury News
—History San Jose



An early candy box from O'Brien's.

(Photo: History San Jose)



Day on the Bay 2023

A MULTICULTURAL FESTIVAL AT THE ALVISO MARINA

SATURDAY, OCTOBER 14 • 10am-3pm

The "Day on the Bay" at the tranquil South Bay shores of Alviso will be held on Oct. 14th from 10 am – 3 pm. The event is sponsored by the Santa Clara County Parks and Supervisor Otto Lee's County District 3 office. A resource fair with information, services and resources within the community, and family-friendly activities will all take place at the Alviso Marina. A PAC*SJ booth will be there, sharing historical information on the Alviso Historic District and San Jose. Our latest pins and t-shirts will also be available for purchase.

The 2023 FREE event will include:

- Health Services & Resource Fair - over 110 booths and vendors
- Flu Shots & COVID Booster Vaccines*
- Pumpkins for Kids* - Sponsored by Milpitas Kiwanis Club
- Kayak Rentals* - Provided by Laine's Baits
- Marina Boat Tours with Santa Clara County Parks*
- Rock Wall & Activities
- Food Trucks
- Entertainment... AND MUCH MORE!

New Merchandise at PAC*SJ Website and Booths



Willow Glen Neon



Dealin' Dollar Dan

PAC*SJ is introducing two new San Jose sign pins (left) and our new Burbank t-shirt (right). Visit our shop online at www.preservation.org/shop to see our all our merchandise.

A set of four pins is only \$45. Single pins are \$15. And don't forget about our guidebooks, magnets and stickers.



Save The Burbank!

2023 DOORS OPEN CALIFORNIA



**A Statewide
Celebration
of Historic Paces**
Sept. 9-10, 2023
Only \$20 for weekend

Visit "behind-the-scenes" through in-person historical tours and story telling events. This weekend is presented by the California Preservation Foundation. Pre-register to reserve your spot at <https://californiapreservation.org/doca/>.

Interesting sites to visit in the South Bay include the Ashworth-Remillard House on Story Road and the Julia Morgan designed Saratoga Foothill Club.

Fremont has multiple sites to visit including Mission San Jose. The Gilroy Historic Museum is included in the list to visit. Stanford's events are listed as the Memorial Chapel and Wright's designed Hanna House but those sold out quickly. San Francisco and Oakland also offer various historic sites. An interactive map of California on the website points to all the site locations. ☿

Germania Hall

Hobee's Restaurant is moving into San Jose's downtown Germania Hall at 261 N. Second Street. It will also feature a beer garden. PAC*SJ is pleased that the 1890s San Jose City Landmark building will be open to the public again, most likely in the late summer or early fall.

Originally the site was the popular and highly respected King Conservatory of Music where music flourished, and the San Jose Symphony was formed. By 1923, the Germania Verein (German Club) purchased the site and still owns it today. Many community events and balls were held at the Germania Hall over the years.

Hobee's plans to serve burgers, salads, and other fare to accompany a large selection of local craft beers. Famous for their breakfasts and lunches (i.e., their famous coffee cake), the restaurant hours at Germania Hall will also be extended into the evening.

Hobee's was founded in 1974 and operates four restaurants on the Peninsula; Mountain View, Sunnyvale, Palo Alto, and Redwood Shores. ☿

PAC*SJ Membership Application or Renewal

Preservation Action Council of San Jose Membership Application or Renewal

Name(s) _____

Telephone(s) _____

Address _____

Email _____

*Provide email address to receive timely notices of news, events and announcements. PAC*SJ will not release your contact details.*

New Member _____ Renewing Member _____

Please circle the level at which you wish to join:

Individual	\$40
Family	\$55
Student or Senior (over 65)	\$25
Non-profit or School	\$25
Contributor	\$100
Patron	\$250
Lifetime Member	\$1,000

Join at the \$100 level or above and receive one or more special premiums listed below.

Please check if you would like to receive

1 premium for Contributor Level ☐

2 Premiums for Patron Level or higher ☐

No Premium ☐

Select your chosen Premium(s) below.

I am enclosing \$ _____ for PAC*SJ membership or donation.

(Or visit us online at www.preservation.org to renew or join)

I am interested in working with the following volunteer opportunities (*please circle*):

Advocacy

Fundraising

Membership

Newsletter

Programs/Education

Events

Board Member

Public Relations

Complete and return with your check to:

Preservation Action Council of San Jose

42A S. First Street, San Jose, CA 95113

Phone: (408)-998-8105

info@preservation.org

Breaking News! First Church

At press time we learned that the “garbage bag church” site (First Church of Christ, Scientist at 43 E. St. James Street) had been cleaned up, the degraded tarps and scaffolding removed, weeds/brush cleared, and the building was to some extent stabilized. Grateful thanks to Jim Salata from Garden City Construction, Len Ramirez, and others for doing what the City of San Jose should have done long before now.

Member Premiums

Choose 1 Premium for Contributor level;
Choose 2 Premiums for Patron level or above.

- ☐ New! Save the Burbank T-Shirt: S, M, L, XL, 2XL
- ☐ Pallesen Enamel Pin
- ☐ Tales of Naglee Park by Jack Douglas
- ☐ San Jose Signs Guide (2022 new edition)
- ☐ Sunset Poster of your choice
- ☐ No Premium—my membership will fully support PAC*SJ programs.



Or Current Resident

Join or Renew Today!



The Preservation Action Council of San Jose is a dynamic nonprofit membership organization dedicated to **preserving our unique and diverse architectural and cultural heritage**. Through advocacy, education, and civic engagement, we promote historic preservation as an essential tool for fostering equitable, distinctive, sustainable, and prosperous communities.

We believe that **historic preservation is good for our quality of life, good for business, and good for the environment**. We aspire to integrate a strong commitment to historic preservation into the land use and development decisions of the City of San Jose that affect historic resources, as well as into the private decisions of property owners and developers. We try to bring owners and developers together to create historically sensitive projects that make economic sense.

PAC* SJ 2023 Board

Lynne Stephenson, President

Michael Sodergren, V.P. Advocacy

Patt Curia, V.P. Fundraising

John Frolli, Treasurer

Cici Green, Secretary

André Luthard, Past President

Sylvia Carroll

Gayle Frank

Marilyn Messina

Gratia Rankin

Staff: Ben Leech, Executive Director

Jennifer Roman, Office Associate

Advisory Board

Bonnie Bamburg

Marvin Bamburg, AIA

Paul Bernal, Esquire

Heather David

Rod Diridon, Sr.

April Halberstadt

Franklin Maggi

Tony May

Margie Matthews

Craig Mineweaser, AIA

Stacy Sirk

Sally Zarnowitz